

**TOGETHER
ENVISIONING
NEW HORIZONS!**

La Rochelle
Université

univ-larochelle.fr





Proximity

Excellence

Success

Innovation

La Rochelle Université, a close knit community university that is anchored in and supported by our region, is ready to **anticipate and meet the challenges of the future**. In a context of constant change and the necessity to raise our profile in the world of Higher Education, La Rochelle Université is striving to create its own identity, **both in France and throughout the world**.

To meet this challenge, La Rochelle Université is **specialising its research activity in the field of a “Smart Urban Coastal Sustainability”** with the full cooperation of the local and regional authorities.

The University is strengthening its research by intensifying its interdisciplinary work, while maintaining our standards of excellence in our graduate and post-graduate programmes to provide our students with a platform for a successful professional career.

The conditions are being created to **foster innovation and form international partnerships**.

The challenge facing our university provides us with a great opportunity to define and bring to fruition our vision for the University of the Future, with the help of a concerted effort on the part of our entire community.

You can find out more about our ambitions in this small brochure.

Enjoy!



Jean-Marc Ogier

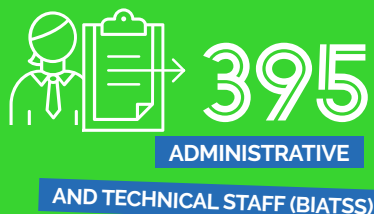
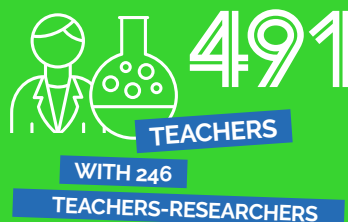
President of La Rochelle
Université

A UNIVERSITY THAT IS BEING TRANSFORMED

Some figures



undergraduates and
post-graduates, **418** in
sandwich courses



University projects:

- **Meet the challenge of the 21st century** in a continually evolving academic world with the globalisation of Higher Education
- **Personalise** our degree programmes to provide our students with a platform for a successful professional career
- **Become one of the principal motors of the economic development of the region** and benefit from **the intellectual power of our student and scientific community** to effect a transformation of the university



1

UNIVERSITY

FOUNDATION



Fondation
Université
de La Rochelle

4 MAIN APPROACHES to achieve this transformation

1

SPECIALISATION OF RESEARCH

Become a leading university, renowned for its excellence in the field of the Smart Urban Coastal Sustainability

2

EDUCATIONAL TRANSFORMATION

Provide guidance to students for their career plans, and welcome an increasingly diverse student population to the university

3

SUPPORT FOR INNOVATION

Through a structured contribution to socioeconomic development thanks to the Campusinnov facility

4

THE INTRODUCTION OF A SMART, SUSTAINABLE AND RESPONSIBLE CAMPUS

By experimenting with a Smart Campus project between now and 2050

The
objective



Become a **dynamic university**, known and recognized at the highest level for its teaching and research through **disciplinary and multidisciplinary approaches** in our area of specialisation, the "Smart Urban Coastal Sustainability".

01

I
**STRUCTURED
— AROUND
A SPECIALISATION
OF OUR RESEARCH**
I

Specific expertise in the quest for success and excellence

CAPITALIZING ON A RECOGNIZED SPECIFICITY



Resources...

- 1 Institute synergising the intellectual potential of the University on the "Smart Urban Coastal Sustainability" theme, including:

9 laboratories

- > **CEBC** . Chizé Centre for Biological Studies*
- > **CEIR** . International Centre for Studies on Roman Civilisation and Culture
- > **CEJEP** . Centre for Legal and Political Studies
- > **CEREGE** . Centre for Research in Management
- > **CRHIA** . Research Centre for Atlantic and International History
- > **L3i** . Laboratory of Informatics Image Interaction
- > **LaSIE** . Laboratory of Engineering Science for the Environment*
- > **LIENSs** . Littoral, Environment and Societies*
- > **MIA** . Mathematics, Image and Application

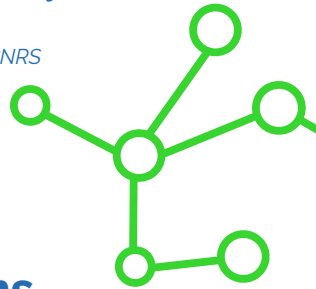
4 federations

- > **FREDD** . Federation of Research in the Environment and Sustainable Development *
- > **IRSTV** . Institute of Research on the Techniques of the City*
- > **MIRES** . Mathematics and their Interactions, Images and Digital Information, Networks and Security*
- > **OASU** . Aquitaine Observatory of the Science of the Universe*

1 joint service unit

- > **Pelagis Observatory***

* accredited by the CNRS



To further our shared ambitions...

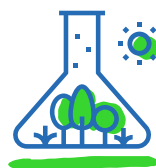
- A multidisciplinary approach to research
- Training students to become international experts
- La Rochelle Université as the international and national leader on the societal challenge of a Smart Urban Coastal Sustainability

In response
to a changing
environment



DIGITAL

ENVIRONMENTAL



SOCIETAL



ENERGY



4 transformations

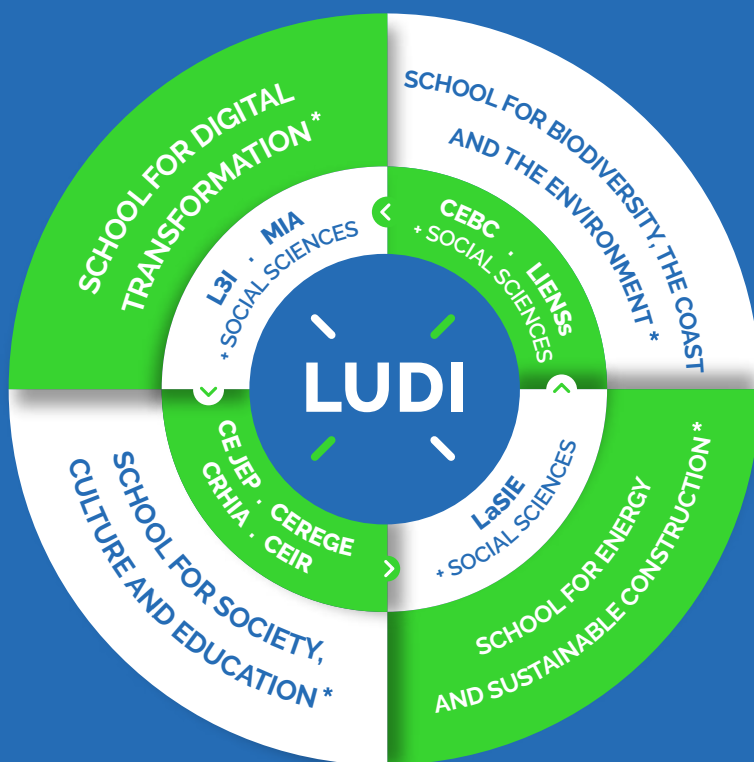
Provide a strong national
and international identity
with an institute dedicated to the

Smart Urban Coastal Sustainability

Smart Urban Coastal

Sustainability

Institute



* These names are being finalised

La Rochelle
Université

52

I

– **INNOVATIVE
EDUCATION
PROGRAMMES
COMBINED WITH
HIGH QUALITY
RESEARCH**

I

A changing labour market

1

PROVIDE COURSES FOR A
HIGHLY DIVERSIFIED STUDENT
POPULATION

• The University prepares students by developing their skills, critical thinking and creativity to foster a fulfilling and successful professional career and build responsible and autonomous European citizens

2

• The University helps meet the needs of the economic sectors in the region by providing easily accessible and high-quality solutions

3

• The University offers high-level teaching backed by its research in its specialty field, a Smart Urban Coastal Sustainability



As part of the Future Investments Programs, the "Open Curriculum" project has been selected under the New Cursus at University section

This recognition means that La Rochelle Université will have a financial support of € 5,597,000 to roll out a new architecture for our courses.



WHAT IS THE AIM OF THIS EDUCATIONAL TRANSFORMATION?



It will allow students to tailor their courses to suit the needs of their career plan

- Personalization of the curriculum: progressive specialization, with a choice of major disciplinary themes ("major") and customizable options ("minor")
- 4/5 courses in classroom (lectures, practical and tutorial work), 1/5 in Guided Learning (TEA)
- Regular meetings between students and tutors to provide personalised course and career advice
- Development of cultural awareness, academic recognition of student engagement and cultural, linguistic and sporting activities



Reaffirm the link between the University and the business world



- Support for innovation with relation to the socio-professional world
- Development of Continuing Education and Work-Study programs
- Boost regional and entrepreneurial projects



A new framework

to promote excellence and success for all students by providing personalized support and preparing them for the world of work

LA ROCHELLE UNIVERSITÉ

SMART URBAN COASTAL SUSTAINABILITY

EUCLIDE DOCTORAL SCHOOL

SCHOOL
FOR
ENERGY AND
SUSTAINABLE
CONSTRUCTION
*

SCHOOL
FOR
BIODIVERSITY,
THE COAST
AND THE
ENVIRONMENT
*

SCHOOL
FOR
DIGITAL
TRANSFOR-
-MATION
*

SCHOOL
FOR
SOCIETY,
CULTURE
AND
EDUCATION
*

FACULTY OF LAW, POLITICAL SCIENCE AND MANAGEMENT

LAW

SCHOOL OF MANAGEMENT

BAC+8

BAC+5

* THESE NAMES ARE BEING FINALISED

INSTITUTE OF TECHNOLOGY

TECH. DE COMMERCIALISATION

GÉNIE CIVIL ET CONSTR. DURABLE

GÉNIE BIOLOGIQUE

INFORMATIQUE

RÉSEAUX ET TÉLÉCOM

COLLEGIUM

BIOLOGY

EARTH SCIENCES

BIOTECHNOLOGY

FOREIGN LANGUAGES

CHEMISTRY

LITERARY STUDIES

ENGINEERING

SOCIAL AND HUMAN SC.

COMPUTING SCIENCE

LAW

MATHEMATICS

MANAGEMENT

PHYSICS

BAC+2-3

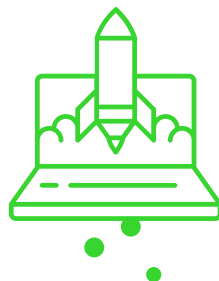
03

I

– A REAL MOTOR OF
SOCIOECONOMIC
DEVELOPMENT

I

Put in place and support a strategic plan for innovation and development



A RE-URBANISATION OF THE UNIVERSITY, WITH SPECIFIC MEASURES AND DEDICATED STAFF INTERLOCUTORS

CampusInnov

For researchers, students and firms

- Support for innovative projects
- An active and dynamic system that covers the entire chain of innovation
- Establish specific spaces for the different phases of innovation:

maturation, emergence, incubation

Objectives



- > Improve the innovation and creativity potential in the region
- > Encourage networking and efficiency
- > Inspire entrepreneurship and support the commercialisation of the results of our research
- > Establish spaces and facilities that constitute an environment conducive to collaboration and that fosters innovation

Sustainable

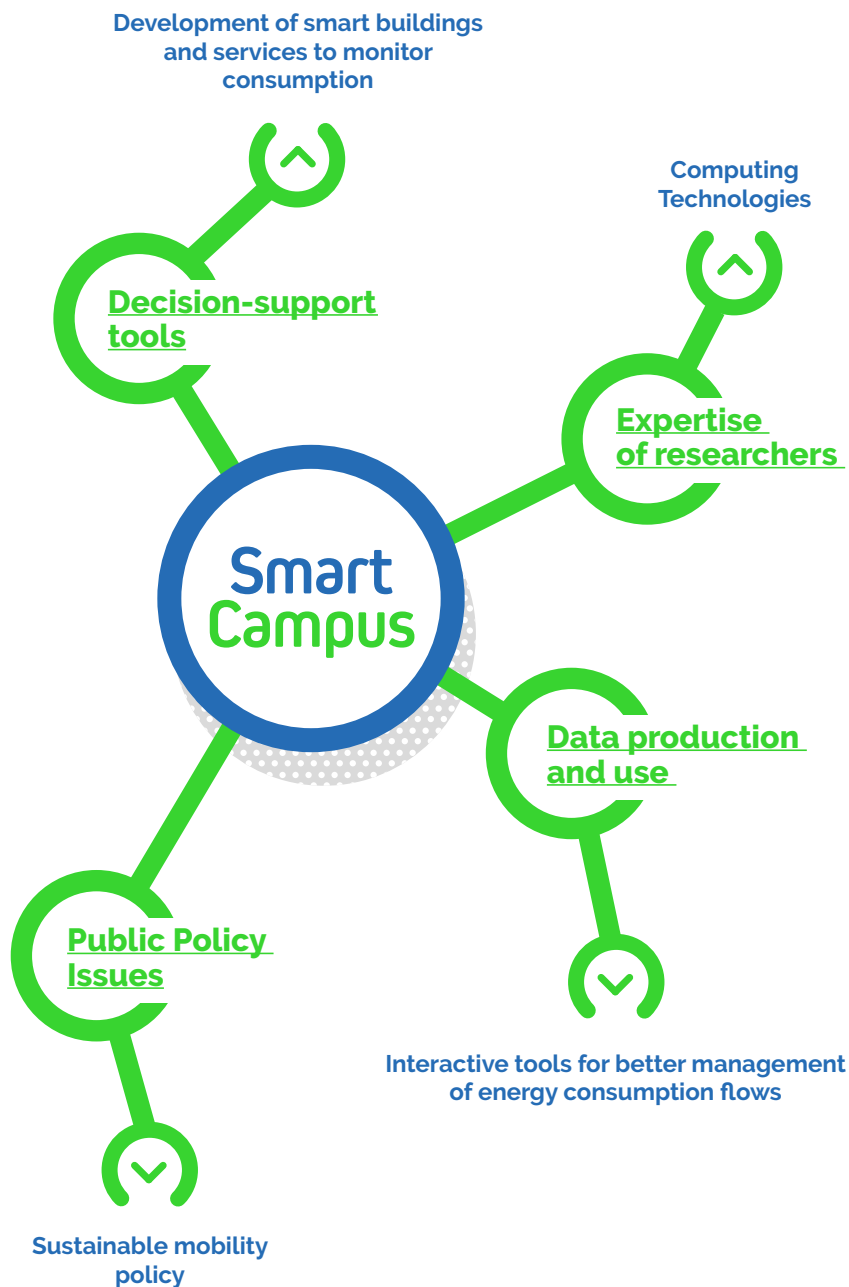
Connected

Smart Campus

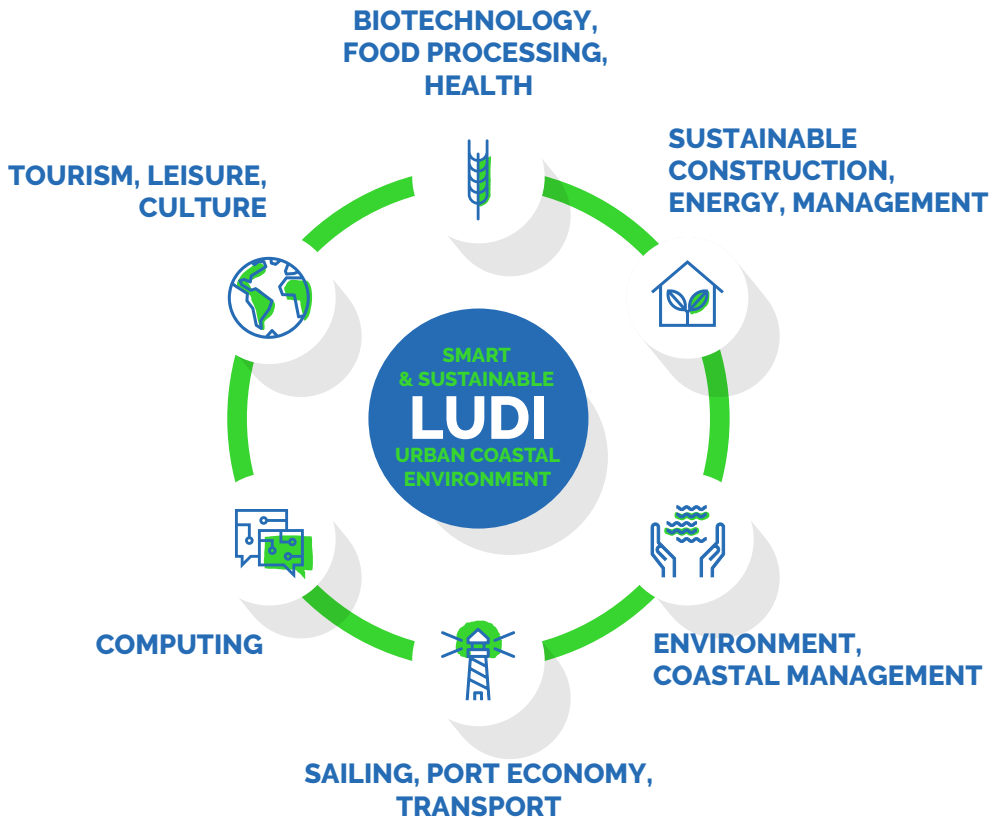
- An eco-responsible "living Lab" campus
- Field of experimentation for research meeting the needs of the region and the challenges of tomorrow
- Nationally and internationally replicable model that embodies a "Smart Campus in a Smart City"

Responsible

Smart



Specific academic interlocutors to optimize the link between the university and the business world



Transdisciplinary skills

MANAGEMENT

DIGITAL TRANSFORMATION
(Web communication, responsible computing)

LANGUAGE
(America, Asia-Pacific)

LAW



Because the success and the preparation of our students for the world of tomorrow is at the heart of our mission, your contribution and commitment is essential. Staff, researchers, teachers, teacher-researchers, administrative agents, current or potential partners, thank you all for wholeheartedly supporting this ambitious project!

**TOGETHER
ENVISIONING
NEW HORIZONS!**

univ-larochelle.fr



La Rochelle
Université

univ-larochelle.fr